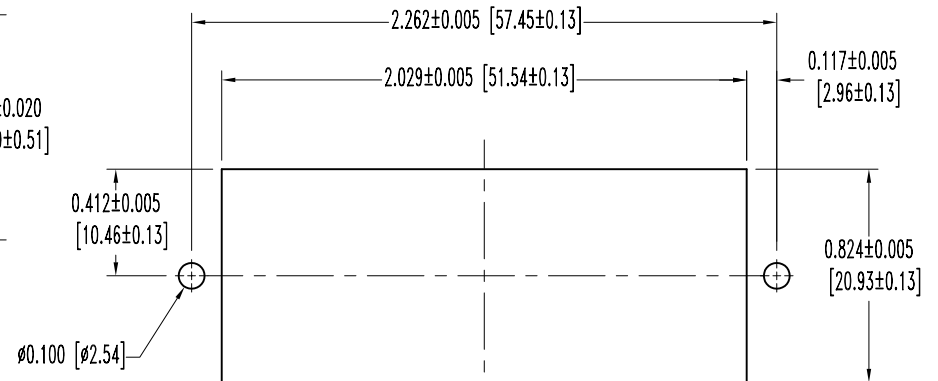
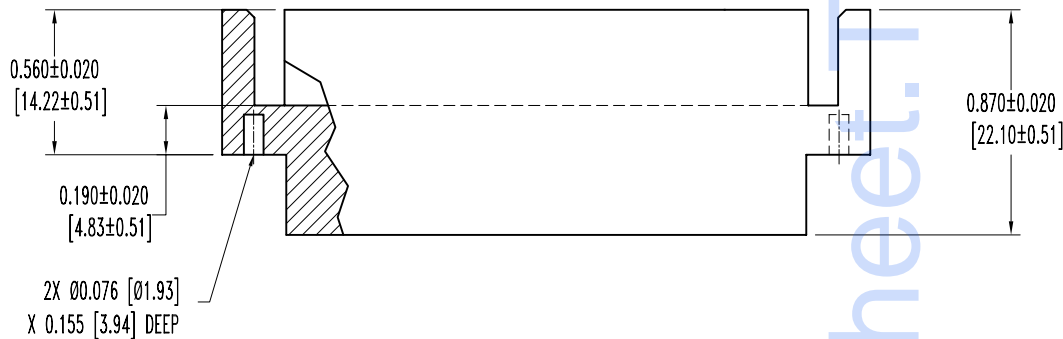
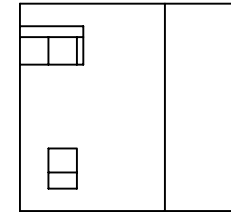
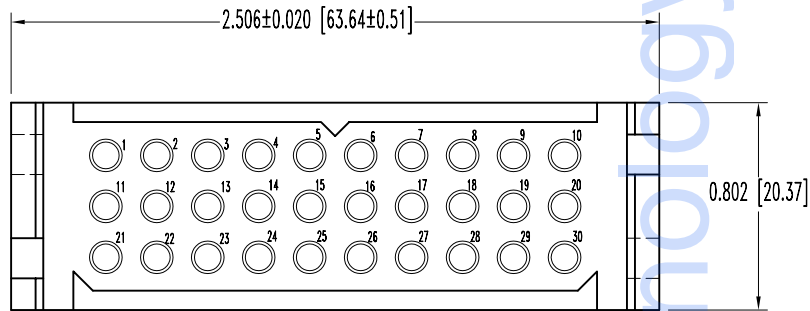


SK5330

POSITRONIC INDUSTRIES BELIEVES THE DATA ON THIS DRAWING TO BE RELIABLE. SINCE THE TECHNICAL INFORMATION IS GIVEN FREE OF CHARGE, THE USER EMPLOYS SUCH INFORMATION AT HIS OWN DISCRETION AND RISK. POSITRONIC INDUSTRIES ASSUMES NO RESPONSIBILITY FOR RESULTS OBTAINED OR DAMAGES INCURRED FROM USE OF SUCH INFORMATION IN WHOLE OR IN PART.

DATE	REV	REVISION RECORD	APP	DR	CK
4-5-04	NC	ECO 22042	RCW	YK	TK
6-7-04	A	ECO 22508		YK	



PANEL CUTOUT

NOTES:

- MATERIALS AND FINISHES:  
INSULATOR: GLASS FILLED POLYESTER, UL 94V-0, COLOR BLUE.
- ELECTRICAL CHARACTERISTICS:  
INSULATOR RESISTANCE: 5 G OHMS PER IEC 512-2, TEST 3a, METHOD A.  
WORKING VOLTAGE: 600 VAC.
- TEMPERATURE RANGE: -55°C TO +125°C.
- DIMENSIONS ARE IN INCHES [MILLIMETERS].

Datasheet.Technology

		<b>POSITRONIC INDUSTRIES INC.</b> www.connectpositronic.com	
		DECIMAL TOL. $\pm 0.015$ [0.38]	TITLE <b>PLC30M1000</b>
ANGULAR TOL. $\pm 5^\circ$	DATE <b>4-5-04</b>	DRAWING NUMBER <b>SK5330</b>	REV. <b>A</b>

<input type="checkbox"/>	<input type="checkbox"/>	<input type="checkbox"/>	<input type="checkbox"/>	<input type="checkbox"/>	<input type="checkbox"/>	<input type="checkbox"/>	<input type="checkbox"/>	<input type="checkbox"/>	<input type="checkbox"/>
<input type="checkbox"/>	<input type="checkbox"/>	<input type="checkbox"/>	<input type="checkbox"/>	<input type="checkbox"/>	<input type="checkbox"/>	<input type="checkbox"/>	<input type="checkbox"/>	<input type="checkbox"/>	<input type="checkbox"/>

**Your Complete Part Number is: PLC30M1B00**

**Instructions:**

1. **To change an option**, simply click on the step below and make a new selection. This page will be updated to reflect the new part number, then follow step 2.
2. **To submit**, click "**Save selection to MY LIST**" located at the bottom of the page.

Dimensions are in inches (millimeters) and are subject to change	
Package Size	<a href="#">PLC</a> 3 rows of size 16 contacts Contact variants: 09, 12, 18, 24, 30. PLCH=high conductivity contacts for higher current ratings
Connector Variant <i>"FACE VIEW OF MALE OR REAR VIEW OF FEMALE"</i> <input type="checkbox"/>	<a href="#">30</a> Thirty size 16 contacts PLC - 18 amp each
Contact Gender <input type="checkbox"/>	<a href="#">M</a> Male Contacts
Contact Termination <input type="checkbox"/>	<a href="#">1</a> Removable contact, panel mounted connector for connection system 8, order contacts separately. View contact selection after completing part number. For high conductivity contact connector, order PL* connectors and MC/FC112N(2)S high conductivity contacts.
Mounting Style <input type="checkbox"/>	<a href="#">B</a> Metal, 90° mounting bracket
Hoods and Panel Mount Access. <input type="checkbox"/>	<a href="#">0</a> No added accessories
Contact Plating	<a href="#">0</a> Contacts ordered separately for removable contact style connector. View contact selection after viewing part number.
Additional Options	No additional options required

**Your Completed Part Number is PLC30M1B00**  
Request quotes/samples/catalogs by clicking below:





# Positronic Industries

## Power Connections Systems

### ORDERING INFORMATION – CODE NUMBERING SYSTEM

Specify Complete Connector By Following Steps 1 Through 8  
Insert "0" When Step Is Not Used

STEP	1	2	3	4	5	6	7	8
	PLB	06	F	3	N	0	A1	

#### STEP 1 - Basic Series

- PLA - 1 Row
- PLAH- 1 Row High conductivity contacts
- PLB - 2 Row
- PLBH- 2 Row High conductivity contacts
- PLC - 3 Row
- PLCH- 3 Row High conductivity contacts

#### STEP 2 - Connector Variants

- 1 Row – 03, 04, 06, 08
- 2 Row – 06, 08, 12, 16
- 3 Row – 09, 12, 18, 24, 30

#### STEP 3 - Connector Gender

- M - Male
- F - Female

#### STEP 4 - Type of Contact

- 0 – Order contacts separately for cable connectors for connection systems 5, 6, 7, 8 and 9.
- 1 – Removable contact, panel mounted connector for connection system 8. Order contacts separately.
- 2 – Solder, 18 AWG [1.0mm<sup>2</sup>] max. for panel mount connector, for connection system 8. Not available as PL\*H.
- 3 – Solder, Straight Printed Board Mount with 0.146 [3.71] tail extension for connection systems 1, 4 and 6.
- 32 – Solder, Straight Printed Board Mount with 0.377 [9.58] tail extension for connection system 3 and systems 1, 4 and 6.
- 4 – Solder, 90° Printed Board Mount with 0.146 [3.71] tail extension for connection systems 1, 2 and 5.
- 42 – Solder, 90° Printed Board Mount with 0.377 [9.58] tail extension for connection system 3 and systems 1,2 and 5.
- 63 – Press-fit, compliant Termination Right Angle Printed Board Mount (Many variants available, contact Technical Sales)
- 7 – Order contacts separately for cable connectors for connection systems 5, 6, 7, 8 and 9. Terminating side of insulator has 0.165 [4.19] ø c'bore for large wire sizes.
- 8 – Removable contact, panel mounted connector for connection system 8. Order contacts separately. Terminating side of insulator has 0.165 [4.19] ø c'bore for large wire sizes.
- 92 – Straight PCB Mount, Press-Fit, length 0.183 [4.65] for 0.093 inch [2.36] thick board.
- 93 – Straight PCB Mount, Press-Fit, length 0.218 [5.54] for 0.125 inch [3.18] thick board.

#### STEP 8 - Special Options

See page 22 for sequential mating systems. Consult factory for other options.

#### STEP 7 - Contact Plating for Printed Board Connectors

- 0 - Crimp Contacts ordered separately.
- A1 - Gold flash over nickel on mating end and gold flash over nickel on termination end.
- A2 - Gold flash over nickel on mating end and 0.00020 inch [5.0 microns] solder coat on termination end.
- C1 - 0.000030 inch [0.8 microns] gold over nickel on mating end and 0.000030 inch [0.8 microns] gold over nickel on termination end.
- C2 - 0.000030 inch [0.8 microns] gold over nickel on mating end and 0.00020 inch [5.0 microns] solder coated termination end.

#### STEP 6 - Hoods and Panel Mount

- 0 - None.
- 5 - Top Opening Hood.
- 6 - Panel Mount, quick release.
- 81 - Panel Mount, fixed for 0.040 [1.02] thick panel.
- 82 - Panel Mount, fixed for 0.060 [1.52] thick panel.
- 83 - Panel Mount, fixed for 0.090 [2.29] thick panel.
- 11 - Blind Mating System for 0.040 [1.02] thick panel.
- 12 - Blind Mating System for 0.060 [1.52] thick panel.
- 13 - Blind Mating System for 0.090 [2.29] thick panel.
- 14 - Blind Mating System for 0.120 [3.05] thick panel.

#### STEP 5 - Mounting Style

- 0 - No added accessories.
- B - Metal 90° Mounting Bracket.
- BN - Metal 90° Mounting Bracket with Push-on Fastener.
- B3 - Plastic 90° Mounting Bracket with Cross Bar.
- B3N - Plastic 90° Mounting Bracket with Cross Bar and Push-on Fastener.
- N - Push-On Fastener For Straight Printed Board Mount Connectors
- ST2 - Self-tapping screws 2-28 x 0.250 [6.35] length for 0.093 [2.36] thick board.
- ST3 - Self-tapping screws 2-28 x 0.312 [7.92] length for 0.125 [3.18] thick board.

DIMENSIONS ARE IN INCHES [MILLIMETERS].  
ALL DIMENSIONS ARE SUBJECT TO CHANGE.

\* For high conductivity contact connectors, order PL\* connectors and \*C112N[2]S contacts